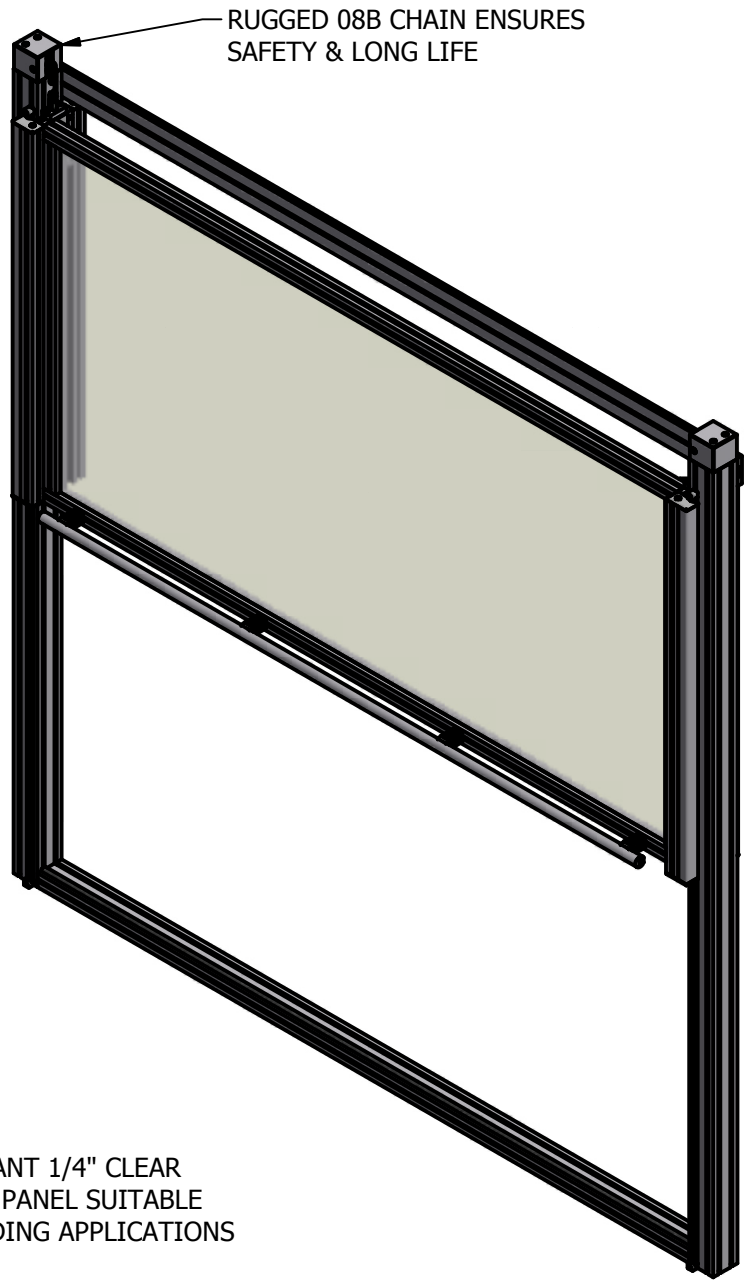
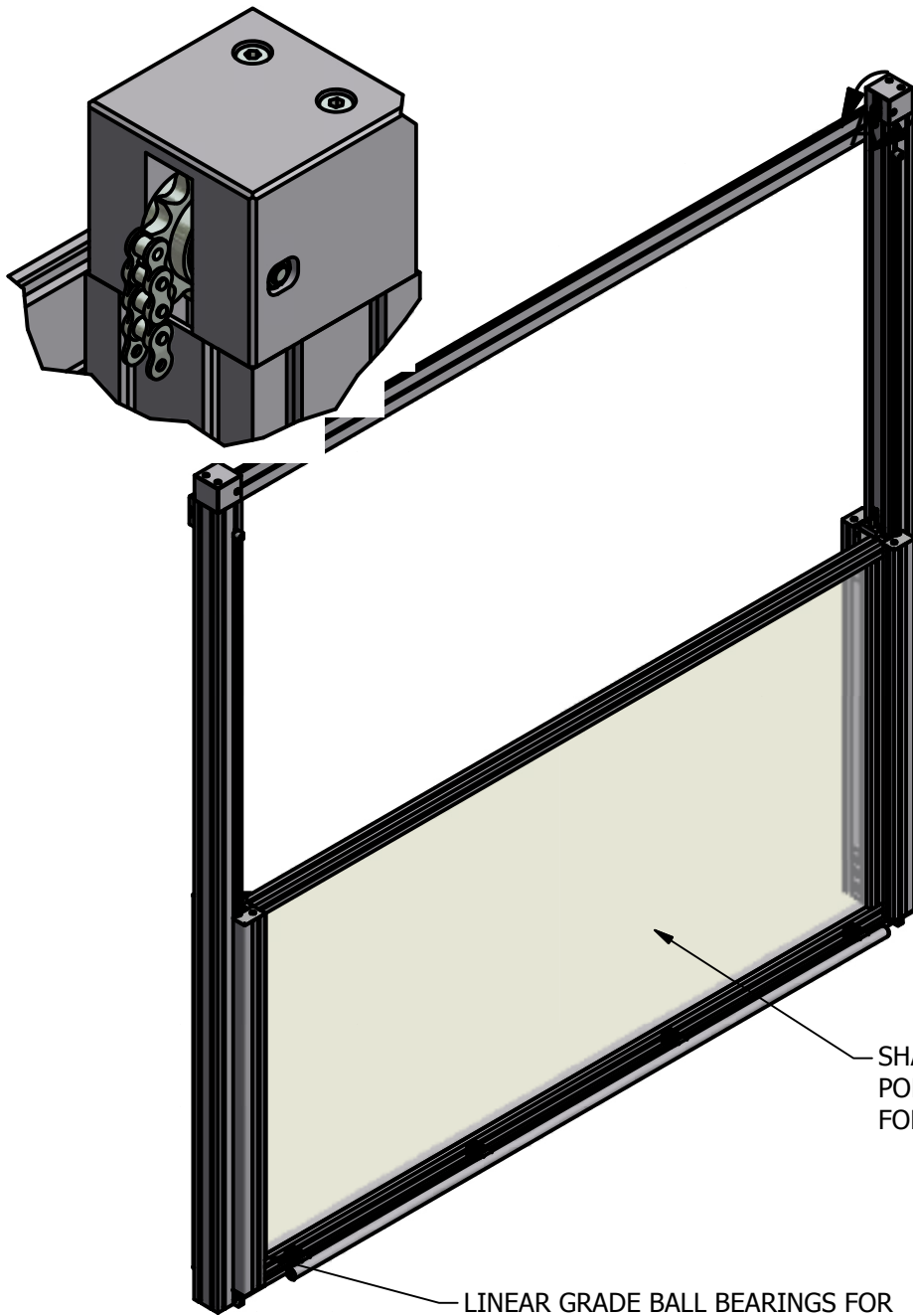


FOR DOORS UP TO 400 LBS



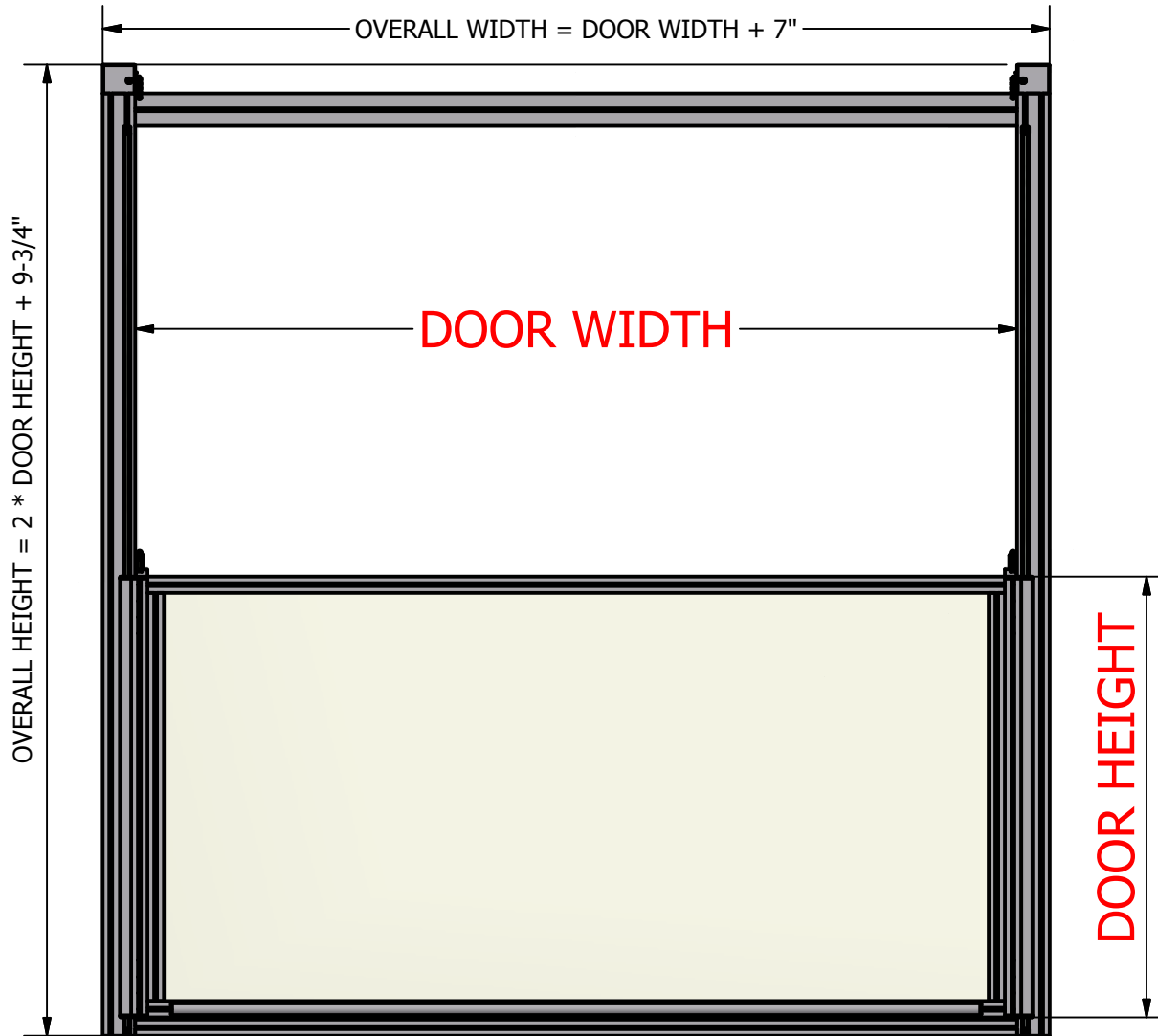
RUGGED 08B CHAIN ENSURES SAFETY & LONG LIFE

SHATTER RESISTANT 1/4" CLEAR POLYCARBONATE PANEL SUITABLE FOR MOST GUARDING APPLICATIONS

LINEAR GRADE BALL BEARINGS FOR YEARS OF SMOOTH OPERATION EVEN IN DIRTY ENVIROMNETS

MiniTec
THE ART OF SIMPLICITY
WWW.MINITECFRAMING.COM
VICTOR, NY
PH # 585 924-4690
DIRECT 585 398-1240 EXT 104
FX # 585 924-4821
amoles@minitecframing.com

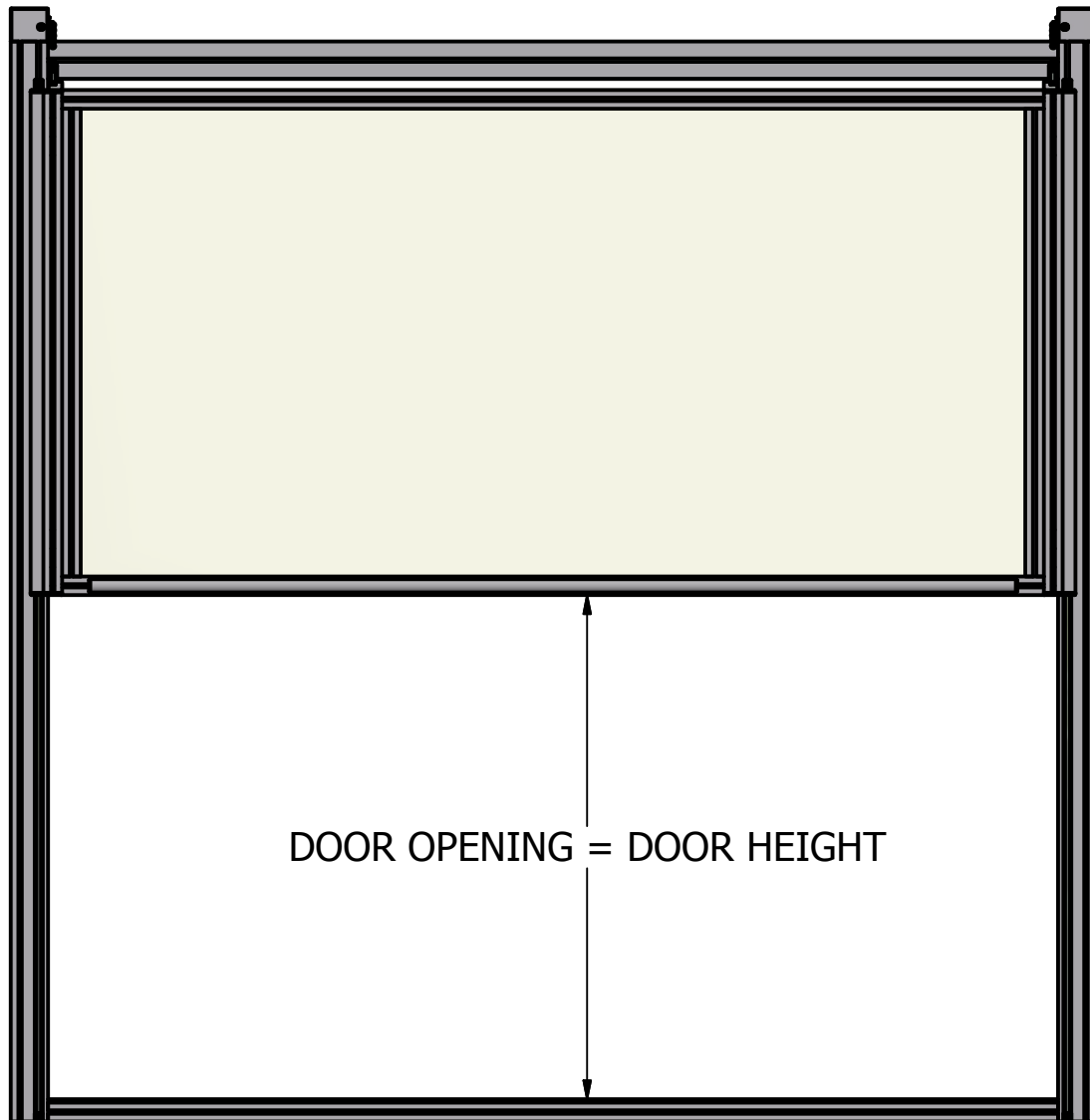
TITLE Heavy Duty Counterweighed Door	DWG NO SP112013	REV
---	---------------------------	-----



MiniTec
THE ART OF SIMPLICITY

WWW.MINITECFRAMING.COM
VICTOR, NY
PH # 585 924-4690
DIRECT 585 398-1240 EXT 104
FX # 585 924-4821
amoles@minitecframing.com

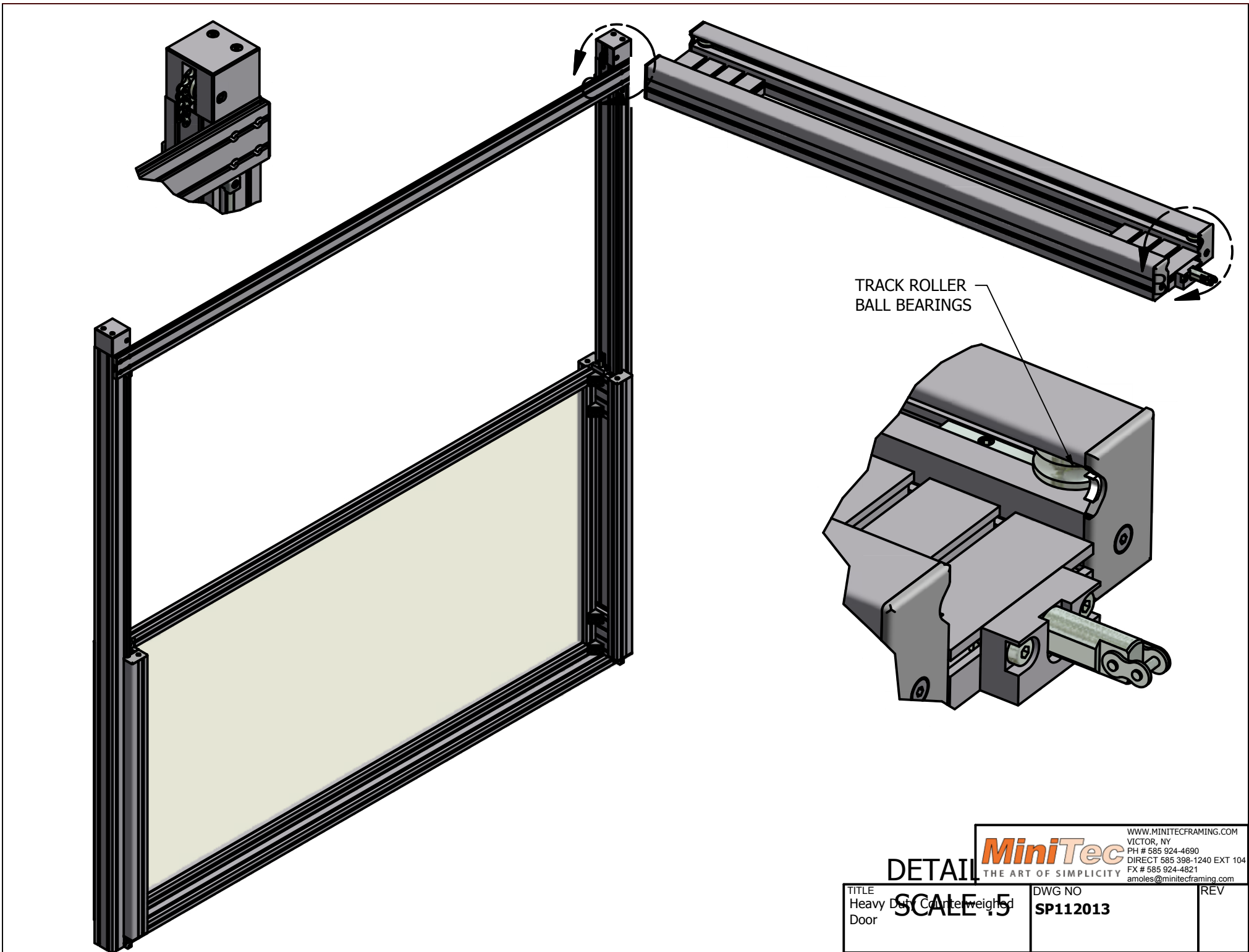
TITLE Heavy Duty Counterweighed Door	DWG NO SP112013	REV
--	---------------------------	-----



DOOR OPENING = DOOR HEIGHT

WWW.MINITECFRAMING.COM
VICTOR, NY
MiniTec
THE ART OF SIMPLICITY
PH # 585 924-4690
DIRECT 585 398-1240 EXT 104
FX # 585 924-4821
amoles@minitecframing.com

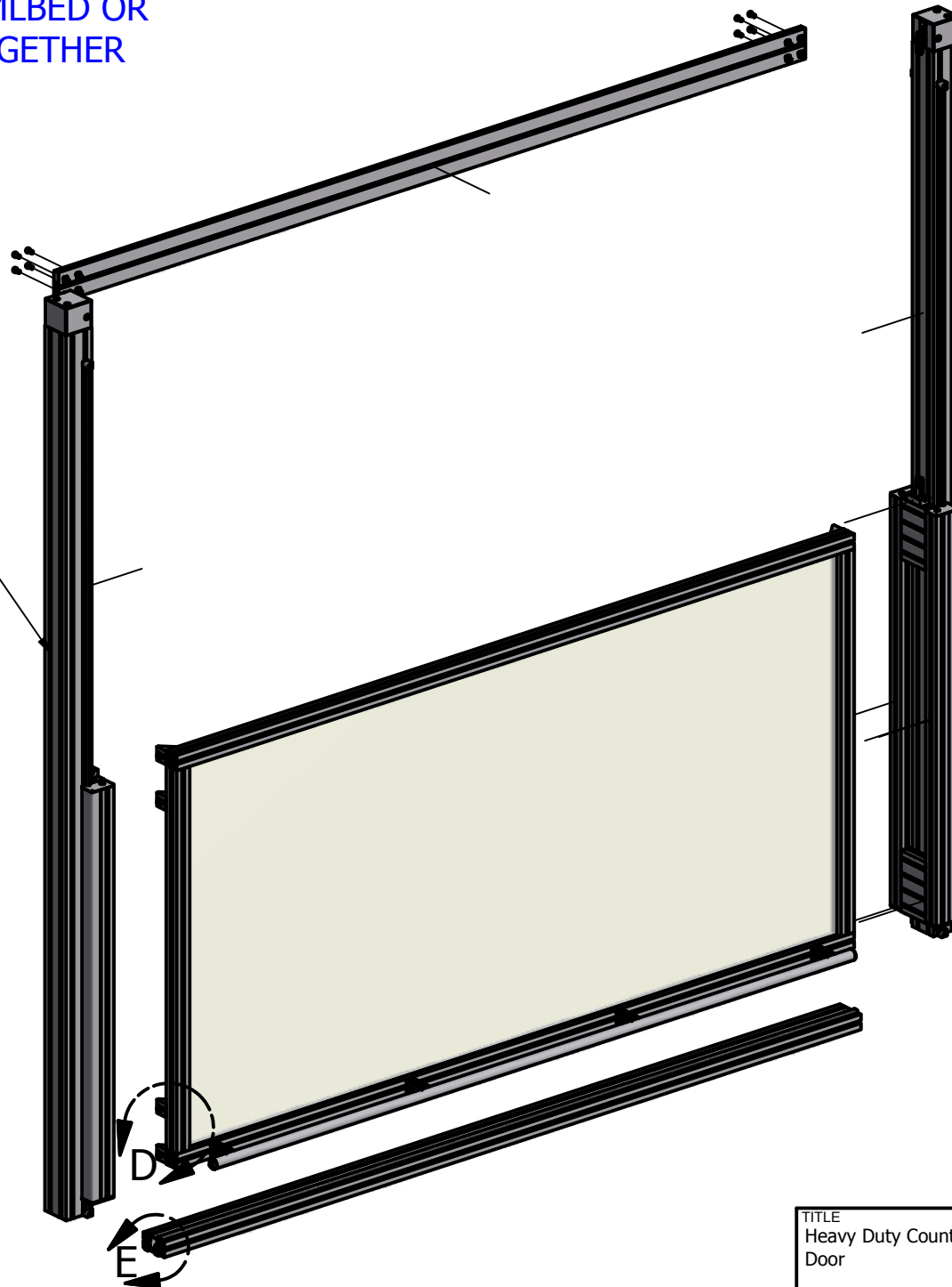
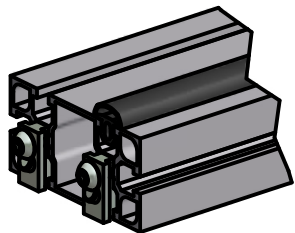
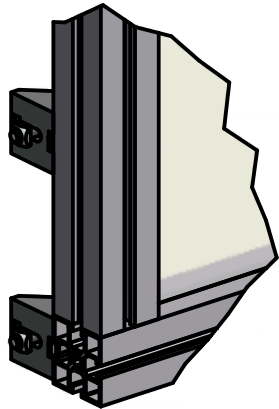
TITLE Heavy Duty Counterweighed Door	DWG NO SP112013	REV
--	---------------------------	-----



<p>WWW.MINITECFRAMING.COM VICTOR, NY PH # 585 924-4690 DIRECT 585 398-1240 EXT 104 FX # 585 924-4821 amoles@minitecframing.com</p>		<p>REV</p>
<p>TITLE Heavy Duty Counterweighted Door</p>	<p>DWG NO SP112013</p>	<p>SCALE 1/5</p>

UNIT CAN SHIP ASSEMBLED OR
AS 5 EASY TO PUT TOGETHER
SECTIONS

COUNTERWEIGHT & SLIDE
SYSTEM SHIPS FULLY
ASSEMBLED



MiniTec
THE ART OF SIMPLICITY

WWW.MINITECFRAMING.COM
VICTOR, NY
PH # 585 924-4690
DIRECT 585 398-1240 EXT 104
FX # 585 924-4821
amoles@minitecframing.com

TITLE Heavy Duty Counterweighted Door	DWG NO SP112013	REV
---	---------------------------	-----